

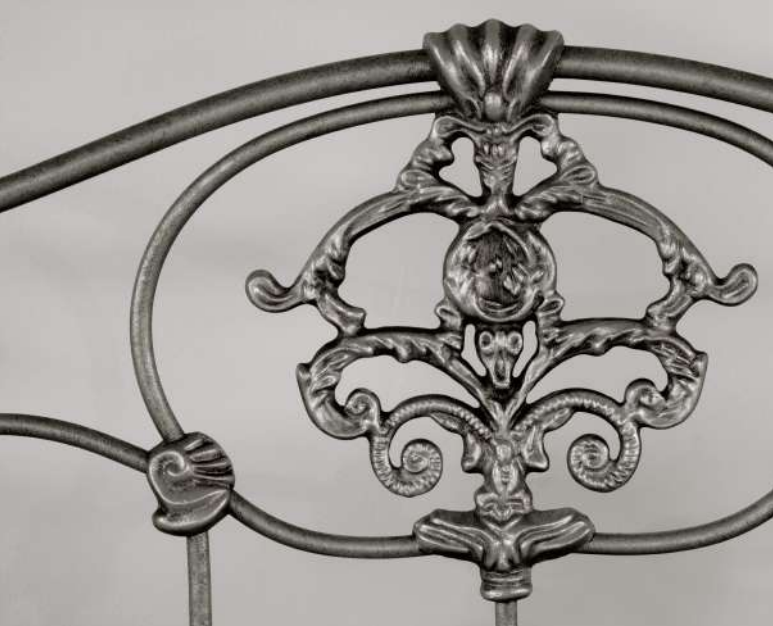


FURNITURE

wesley Allen
the core of expressive interiors



the core of expressive interiors



With over 40 years of expertise and a historic track record for superior quality, Wesley Allen is the leading manufacturer and designer of expressive and eclectic iron furniture. Our handmade designer iron furniture offers a durability and versatility unmatched by wood and other materials—making it a statement piece in the home. Our commitment to historic quality standards, innovative designs, exceptional product lines, and the environment, drives us to achieve greatness.



Since 1976, Wesley Allen has maintained its strategic efforts and close-knit company culture. By adapting and streamlining our process, we continue to deliver affordability without sacrifice to quality and aesthetics, while our premium materials ensure that our furniture withstands time. The true essence of each Wesley Allen product is a reflection of the spirited craftsmen who guide it through the artistic engineering process.

This catalog is a representation of the passion and dedication that defines Wesley Allen and showcases the evolution of our brand and expanded product lines: iron beds, dining sets, barstools, and benches. We invite you to fully experience the versatility and craftsmanship of Wesley Allen iron furniture.

Victor Sawan, CEO



Wesley Allen factory rooftop
in downtown L.A.

Environment

We believe we have a moral obligation to leave this Earth a better place than we found it — harmonizing our company needs with those of the environment. Our Los Angeles manufacturing facility, located in the historic Industrial Goodyear Track, utilizes one of the largest solar energy systems in Southern California. Moreover, our zero-emissions, eco-friendly finish bays enhance our position as a leader when it comes to environmentally conscious manufacturing.

By creating eco-conscious products that last through generations, Wesley Allen offers today's consumer a solution that unites beauty and peace of mind.



Craftsmanship

By maintaining timeless standards founded in the principles of American craftsmanship, Wesley Allen remains the pioneer of iron furniture manufacturing. Our skilled craftsmen and state-of-the-art technology ensure each eclectic piece is unique and carefully hand-crafted to create furniture of the highest quality and style.

UniBody Construction

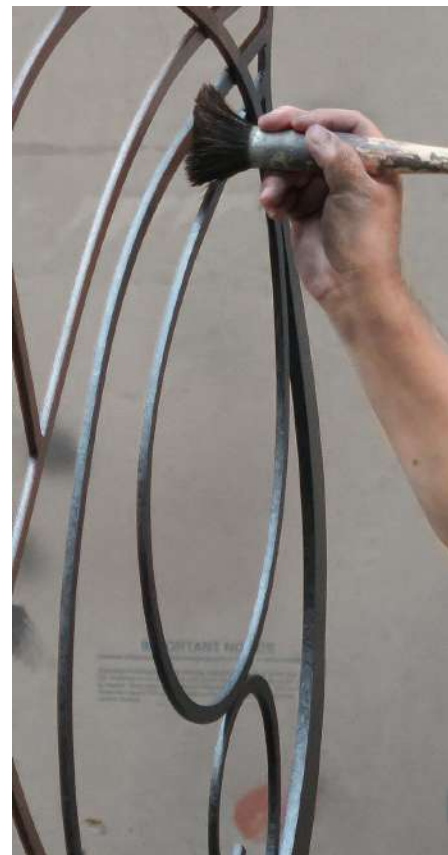
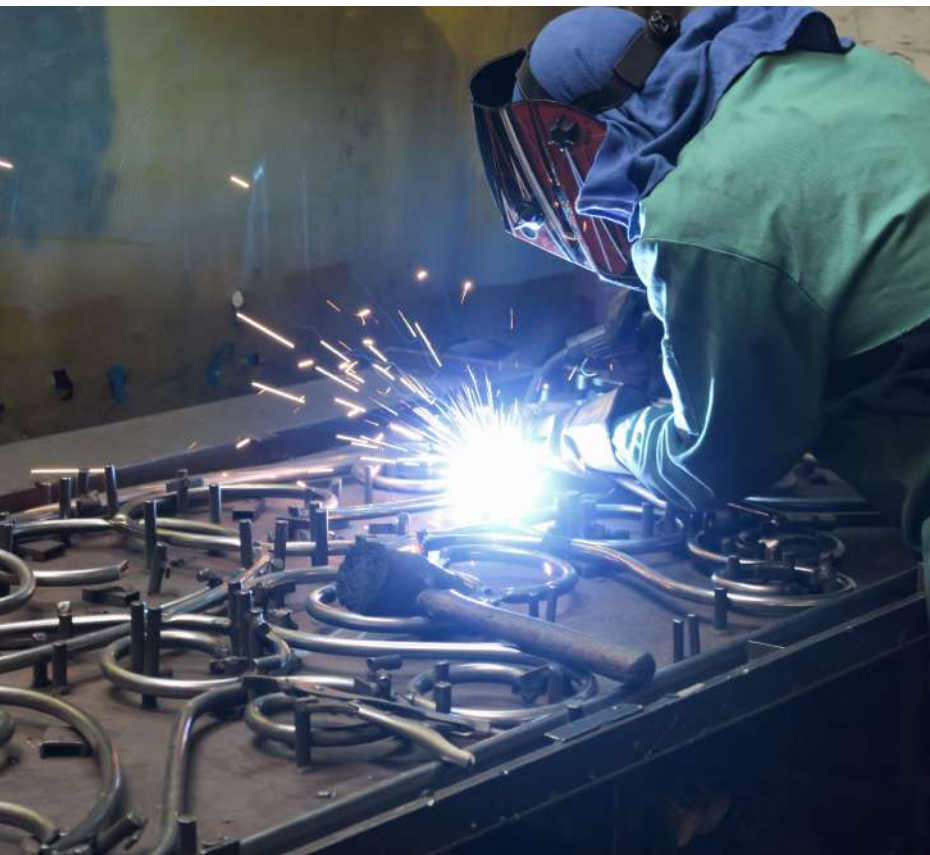
Experienced craftsmen meticulously weld each piece together then hand-pour each decorative casting directly over the welded iron to create an exceptionally solid bed as uncompromising in strength as it is in beauty.

Exclusive Powerbond™ Finish

Expert colorists apply each finish by coating the bed in a powder paint before baking it in specialty ovens at extremely high temperatures, delivering a finish of superior durability and richness.

Patented Millennium™ Frames

We carefully design and manufacture our bed frames using high gauge steel to ensure stability and mattress support, making them the strongest frames in the industry.



THE EVOLUTION OF IRON

Passion for innovation and high-quality iron design define Wesley Allen as a company and drive our expanding product line. With our vast array of customization capabilities, we invite you to transform with us. Make our designs your own and create a timeless piece that defines your personality and brings your living space to life.



OVER 30 FINISHES



WIDE SELECTION OF UPHOLSTERY





CUSTOM

BEDS | BAR STOOLS | DINING SETS | BENCHES

Creating a unique Wesley Allen piece is simple:

- 1. PRODUCT:** Begin by selecting any product, and with many of our iron beds, the configuration of your choice.
- 2. FINISH:** Select from our many finishes to create your envisioned look, mood, and tone.
- 3. UPHOLSTERY:** Many of our products feature upholstery. Select from our broad range of fabrics and leathers. Customer's Own Material (C.O.M.) is welcome.
- 4. ORDER:** Submit your design to a local Wesley Allen dealer.

IRON BED CONFIGURATIONS



Create a unique iron bed that complements your style. Select from our available configurations: Complete Bed, Canopy, Return Posts, Surround (Fabric Sides), and Headboard only.

The Headboard only frame is made of high gauge steel with reinforced corners and center supports for added strength.





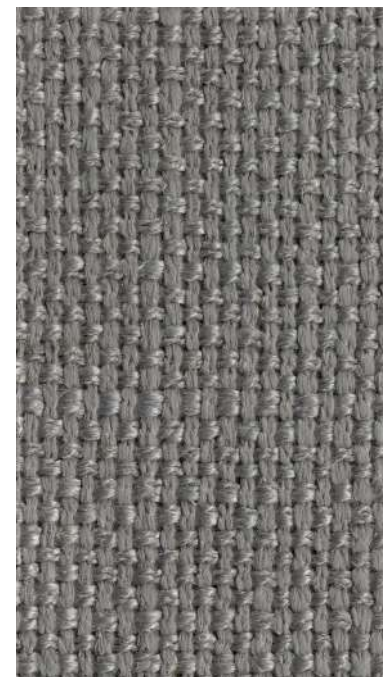
Loft Beach



Loft Magnolia



Loft Sand



Loft Grey



Loft Burlap



Pearl Santorini



Petal Santorini



Hemp Santorini

Pattern**Loft**

Content: Polyester and Linen

Cleaning Code | S

Spot clean only with a water-free dry cleaning solvent. Pretest a small, inconspicuous area before proceeding. Do not saturate. **DO NOT USE WATER.** Pile fabrics may require brushing with a non-metallic, stiff bristle brush to restore appearance. Cushion covers should not be removed and dry-cleaned. To prevent overall soiling, frequent vacuuming or light brushing with a non-metallic, stiff bristle brush to remove dust and grime is recommended. When cleaning a spill, blot immediately to remove spilled material. Clean spots or stains from the outside to the middle of the affected area to prevent circling. **Overall cleaning by a professional furniture cleaning service only is recommended.**

Pattern**Santorini**

Content: Polyester and Viscose

Cleaning Code | S

Spot clean only with a water-free dry cleaning solvent. Pretest a small, inconspicuous area before proceeding. Do not saturate. **DO NOT USE WATER.** Pile fabrics may require brushing with a non-metallic, stiff bristle brush to restore appearance. Cushion covers should not be removed and dry-cleaned. To prevent overall soiling, frequent vacuuming or light brushing with a non-metallic, stiff bristle brush to remove dust and grime is recommended. When cleaning a spill, blot immediately to remove spilled material. Clean spots or stains from the outside to the middle of the affected area to prevent circling. **Overall cleaning by a professional furniture cleaning service only is recommended.**





Haze 90344



Haze 90372



Haze 90378



Haze 90383



Milan 81663



Milan 81995



Milan 81996



Milan 82004

Pattern**Haze**

Content: Polyester and PP

Cleaning Code | WS

Spot clean with upholstery shampoo, foam from a mild detergent, or mild dry cleaning solvent. Pretest a small inconspicuous area before proceeding. Do not saturate. Pile fabrics may require brushing with a non-metallic, stiff bristle brush to restore appearance. Hot water extraction or steam cleaning is not a recommended cleaning method. Cushion casings should not be removed and laundered or dry-cleaned. To prevent overall soiling, frequent vacuuming or light brushing with a non-metallic, stiff bristle brush to remove dust and grime is recommended. When cleaning a spill, blot immediately to remove spilled material. Clean spots or stains from the outside to the middle of affected area to prevent circling. **Use a professional furniture cleaning service when an overall soiled condition has been reached.**

Pattern**Milan**

Content: Polyester and PP

Cleaning Code | S

Spot clean only with a water-free dry cleaning solvent. Pretest a small, inconspicuous area before proceeding. Do not saturate. **DO NOT USE WATER.** Pile fabrics may require brushing with a non-metallic, stiff bristle brush to restore appearance. Cushion covers should not be removed and dry-cleaned. To prevent overall soiling, frequent vacuuming or light brushing with a non-metallic, stiff bristle brush to remove dust and grime is recommended. When cleaning a spill, blot immediately to remove spilled material. Clean spots or stains from the outside to the middle of the affected area to prevent circling. **Overall cleaning by a professional furniture cleaning service only is recommended.**





Hex Appeal Mineral



Hex Appeal Ivory



Linen



Orissa Seagrass



Billow Celestial



Billow Smoke



Billow Dew

Pattern

Hex / Billow

Content: Polyester and Cotton Polyester

Cleaning Code | S

Spot clean only with a water-free dry cleaning solvent. Pretest a small, inconspicuous area before proceeding. Do not saturate. **DO NOT USE WATER.** Pile fabrics may require brushing with a non-metallic, stiff bristle brush to restore appearance. Cushion covers should not be removed and dry-cleaned. To prevent overall soiling, frequent vacuuming or light brushing with a non-metallic, stiff bristle brush to remove dust and grime is recommended. When cleaning a spill, blot immediately to remove spilled material. Clean spots or stains from the outside to the middle of the affected area to prevent circling. **Overall cleaning by a professional furniture cleaning service only is recommended.**

Pattern

Linen

Content: Polyester

Cleaning Code | WS

Spot clean with upholstery shampoo, foam from a mild detergent, or mild dry cleaning solvent. Pretest a small inconspicuous area before proceeding. Do not saturate. Pile fabrics may require brushing with a non-metallic, stiff bristle brush to restore appearance. Hot water extraction or steam cleaning is not a recommended cleaning method. Cushion casings should not be removed and laundered or dry-cleaned. To prevent overall soiling, frequent vacuuming or light brushing with a non-metallic, stiff bristle brush to remove dust and grime is recommended. When cleaning a spill, blot immediately to remove spilled material. Clean spots or stains from the outside to the middle of affected area to prevent circling. **Use a professional furniture cleaning service when an overall soiled condition has been reached.**

Pattern

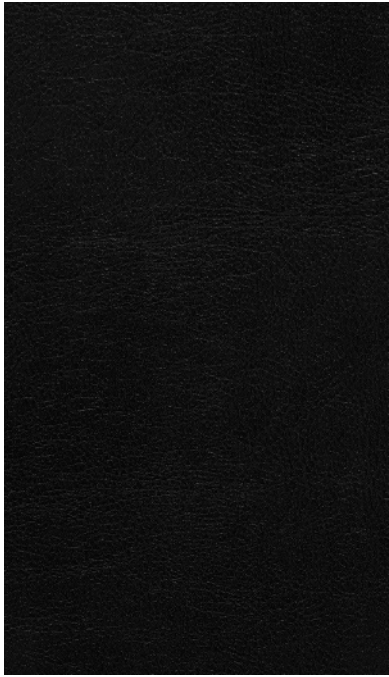
Orissa

Content: Polyester, Linen, and Rayon

Cleaning Code | W

Spot clean only with water based shampoo or foam upholstery cleaner. Pretest a small, inconspicuous area before proceeding. Do not over wet. Do not use solvents to spot clean. Pile fabrics may require brushing with a non-metallic, stiff bristle brush to restore appearance. Hot water extraction or steam cleaning is not a recommended cleaning method. Cushion covers should not be removed and laundered. To prevent overall soiling, frequent vacuuming or light brushing with a non-metallic, stiff bristle brush to remove dust and grime is recommended. When cleaning a spill, blot immediately to remove spilled material. Clean spots or stains from the outside to the middle of the affected area to prevent circling. **Use a professional furniture cleaning service when an overall soiled condition has been reached.**





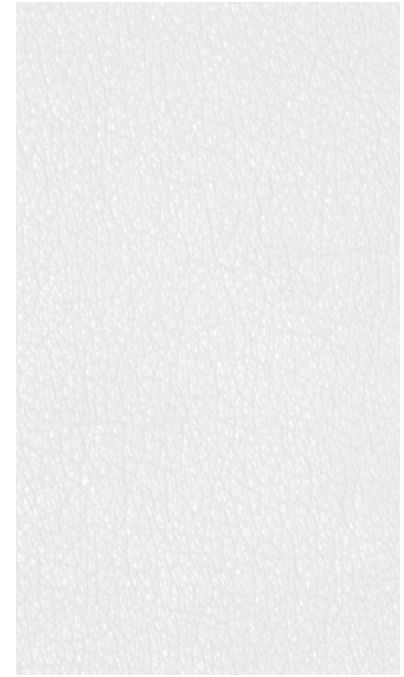
Cantina Black



Cantina Saddle



Cantina Peanut



Aspen Pure White



Oregon Trail Java



Cantina Taupe



Cantina Dove

Bonded Leather**Cantina / Oregon Trail Java**

Content: PU, Polyester, Cotton, and Leather

Cleaning Code | WS

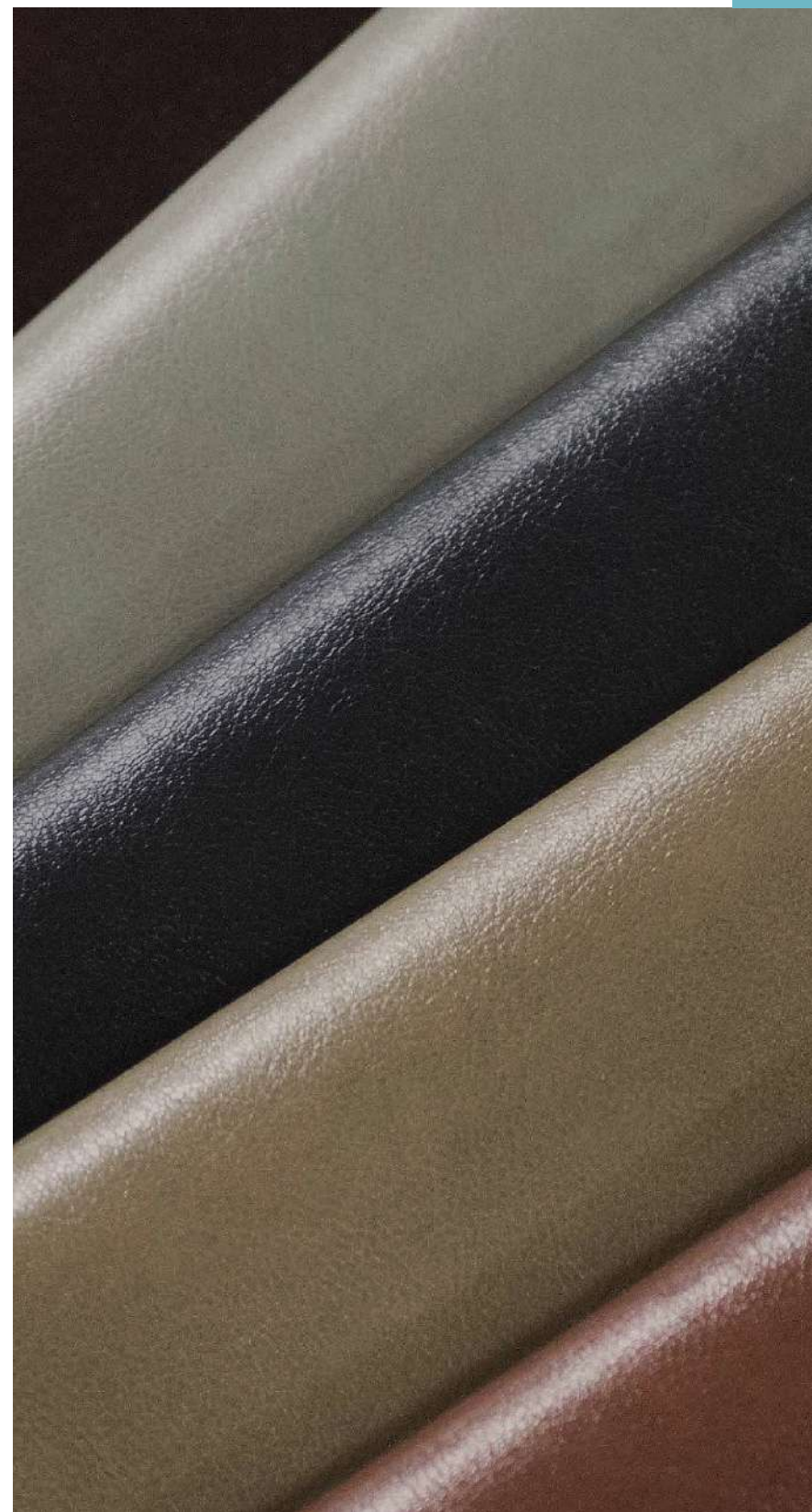
Spot clean with upholstery shampoo, foam from a mild detergent, or mild dry cleaning solvent. Pretest a small inconspicuous area before proceeding. Do not saturate. Pile fabrics may require brushing with a non-metallic, stiff bristle brush to restore appearance. Hot water extraction or steam cleaning is not a recommended cleaning method. Cushion casings should not be removed and laundered or dry-cleaned. To prevent overall soiling, frequent vacuuming or light brushing with a non-metallic, stiff bristle brush to remove dust and grime is recommended. When cleaning a spill, blot immediately to remove spilled material. Clean spots or stains from the outside to the middle of affected area to prevent circling. **Use a professional furniture cleaning service when an overall soiled condition has been reached.**

Bonded Leather**Aspen Pure White**

Content: PU, Polyester, Cotton, and Leather Chips

Cleaning Code | W

Spot clean only with water based shampoo or foam upholstery cleaner. Pretest a small, inconspicuous area before proceeding. Do not over wet. Do not use solvents to spot clean. Pile fabrics may require brushing with a non-metallic, stiff bristle brush to restore appearance. Hot water extraction or steam cleaning is not a recommended cleaning method. Cushion covers should not be removed and laundered. To prevent overall soiling, frequent vacuuming or light brushing with a non-metallic, stiff bristle brush to remove dust and grime is recommended. When cleaning a spill, blot immediately to remove spilled material. Clean spots or stains from the outside to the middle of the affected area to prevent circling. **Use a professional furniture cleaning service when an overall soiled condition has been reached.**



Hand Applied Finishes | Standard



White



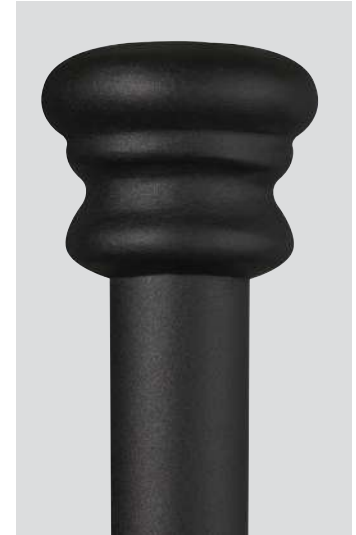
Antique White



Matte White



Rustic Ivory



Matte Black



Aged Iron



Golden Brown



Natural Rust



Pewter



Aged Nickel



Black Suede



Copper Bisque



Brass Bisque



Golden Bisque



Silver Bisque



Platinum



FM54 French Natural
Low Dome
Head Size: 5/8"
Nail Length: 5/8"



PM54 Glazed Pewter
Low Dome
Head Size: 5/8"
Nail Length: 5/8"

Hand Applied Finishes | Custom



Cottage White*



Distressed White*



Vintage White*



Aged Bronze



Aged Brass



Antique Verde



Textured Verde



Textured Old World



Textured Copper Moss



Textured Blue



Old Copper



Natural Steel



Aged Steel



Aged Rust



Textured Charcoal Brown



Textured Cabernet



Weathered Grey



Weathered Sage



Aged Copper Brown



Brass / Mocha (2-Tone)